

# ELITE 110V Fume Extractor

(with 10 metre ducting hose)



## Operator's Manual

### 3. General Description

The elite range of fume extractors have a 1.5mm high grade steel body with an aluminium alloy motor housing, which provides an excellent heat elimination and a reduction in weight. The overall design of the extractors gives exceptional air flow and pressure. The ducting measures 10 metres in length and is made from a flexible retardant material.

### 4. Uses of the fan:

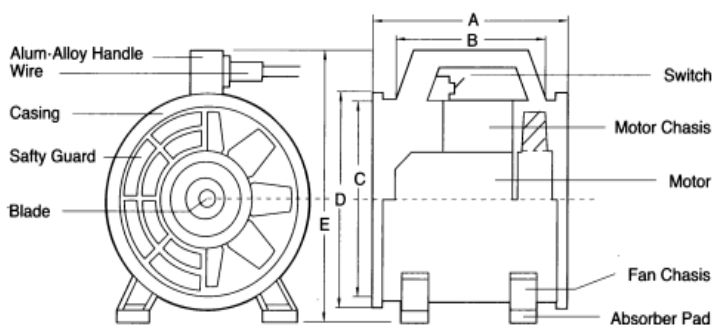
DO NOT use the Fume Extractors in a flammable environment, explosive environment or a corrosive environment. The Fume Extractor should only be operated with the voltage stipulated on the name plate on the unit. Temperature range: <40°C: Relative Humidity : <90%: Dust and other solid particle contained: <100mg/ Cubic Meter.

The fan is suitable for extraction and fresh air supply in such locations as underground warehouses, tunnels, chemical labs, ships, cabins etc.

### 5. Main Technical Data:

Size	Voltage	Frequency	Phase	Power	Speed	Wind Rate	Static Pressure	Noise
300 mm	110 V	50/60 Hz	Single	520 W	2800 / 3400 r/min	60/70 m <sup>3</sup> /min	343/490 Pa	92 dB(A)

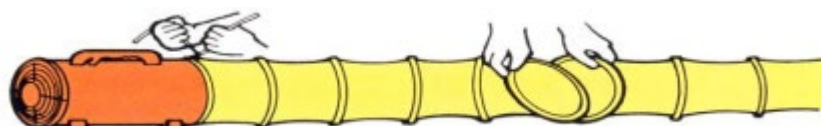
### 2. External Dimensions:



Specification	A	B	C	D	E
300 mm	358	248	300	320	405

### 1. Connection Method for Flexible Ducting:

The Elite Fume Extractor ducting is made especially for this Fume extractor. The connection method is shown below. To connect the ducting to the machine, firstly align the ducting towards the outlet of the fume extractor, then secure to the unit by tying the string on the end of the ducting. Do not connect more than 2 lengths of ducting to each other.



## 6. Important Safety Issues:

Prior to power on, please ensure that the voltage of the power supply should conform to the voltage stipulated in the nameplate, to prevent the motor from being damaged.

The ventilator should be grounded properly.

The IP rating of the Elite Fume Extractor is IP44, therefore it will not be suitable for outdoor use.

As the socket is used for power connection, the standard plug that meets the safety regulations should be used for the power cord of the fan.

While operating, the product should not be adjusted or moved.

While the blade is rotating, no object should be inserted into the grill.

Do not block the inlet or outlet of the fume extractor.

In the event of the unit creating unusual noises, shut down the machine immediately and contact your local service agent or manufacturer.

The ambient temperature for the product should not be higher than +40°C. Please do not use the product in an environment of high temperature or high humidity. Also do not place the unit in an area where explosive or flammable, dust and gases are stored.

The appliance is not intended for use by person (including children) with reduced physical, sensory or mental capabilities, or lack of experience and knowledge, unless they have been given supervision or instruction concerning the use of the appliance by a person responsible for their safety.

Children should be supervised to ensure that they do not play with the appliance.

Ensure that the fan is switched off from the mains supply before removing the guard for cleaning purposes.

If the supply cord is damaged, it must be replaced by the manufacturer, its service agent or similarly qualified persons in order to avoid a hazard.

Don't move the appliance by pulling the supply cord.

## 7. Maintenance:

While not in use, the ventilator should be wiped, properly packed and placed in a clean and ventilated environment.



Electric Soldering



Smoking



Basement Ventilation



Ship (waste gas exhausted out of hold)



Chemical laboratory