



# PARTS DRAWING

**MCE MASTER**  
CLIMATE SOLUTIONS

**Master 43kw 110v  
Infra-Red Oil-Fired Heater**

**Product Code:  
DXL9S**



Serial Number Range:

From:

To:

Year Of Manufacture: 2019

**\*Please note, when ordering online via our website if the part number is not recognised,  
please Email [spares@hscgroupuk.co.uk](mailto:spares@hscgroupuk.co.uk) or Telephone 0115 946 1988**

**KEEP THIS BOOKLET FOR FUTURE REFERENCE**

Nottingham: 0115 946 1988 • London: 0208 830 3333 ✉ Nottingham: [sales@hscgroupuk.co.uk](mailto:sales@hscgroupuk.co.uk) • London: [sean@hscgroupuk.co.uk](mailto:sean@hscgroupuk.co.uk) 🌐 [www.hscgroupuk.co.uk](http://www.hscgroupuk.co.uk)

The Hire Supply Company Terms & Conditions Apply At All Time E&OE

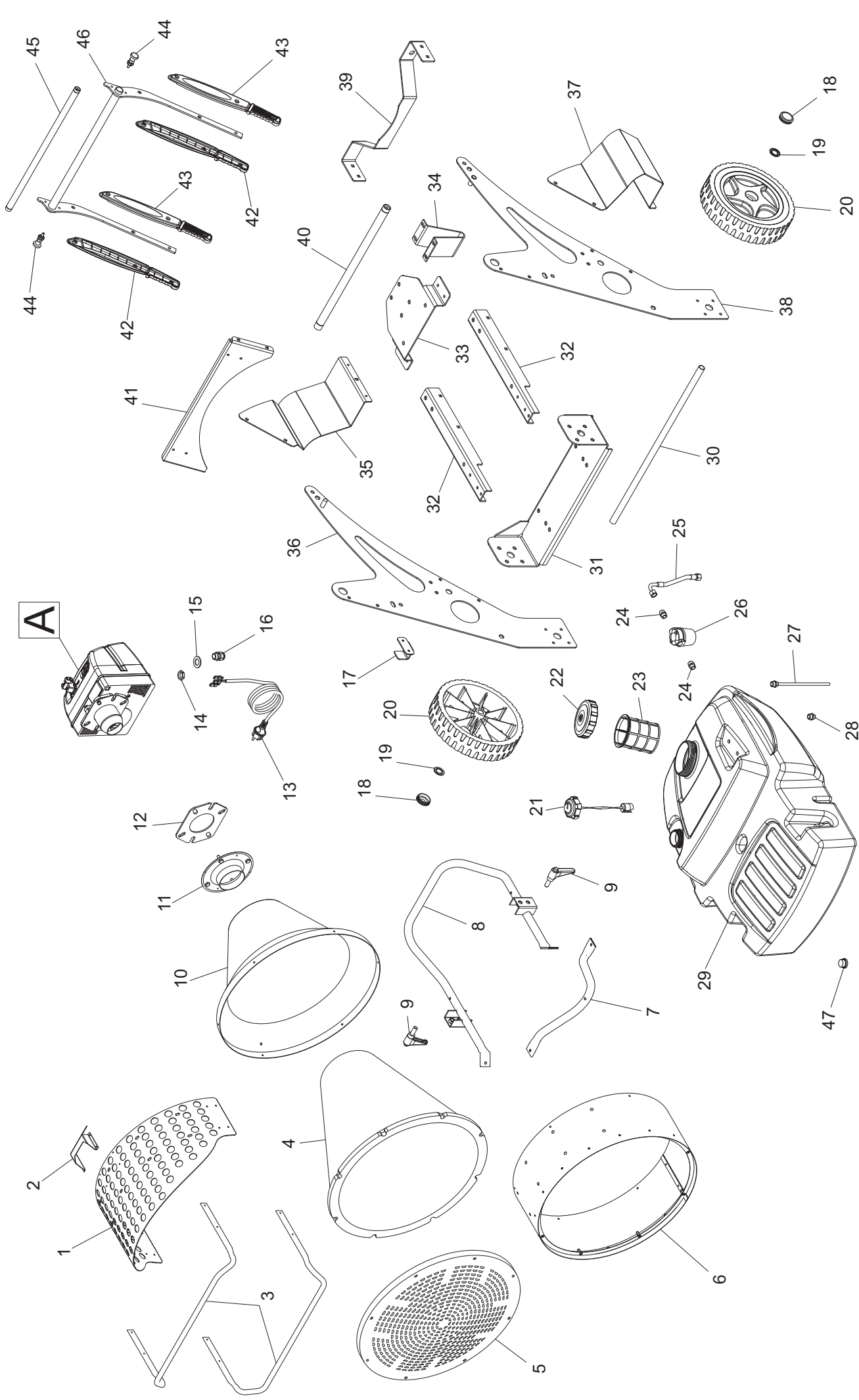
# MODEL XL9 ER-SR

## UNIT 1

## ILLUSTRATED PARTS BREAKDOWN

From serial number:

Rev.- -Apr. 2019



# MODEL XL9 ER-SR

UNIT 2

PARTS LIST

N°	CODE	DESCRIPTION
1	4117.026	INSULATION PLATE
2	4117.027	LABEL BRACKET
3	4117.096	PROTECTION TUBE
4	4117.481	INSULATION FIBER CHAMBER
5	4117.043	RADIATION PLATE
6	4117.072	CILINDER
7	4117.055	LOWER CHASSIS
8	4117.032	CHASSIS
9	4117.294	ROTATION HANDLE
10	4117.104	METAL CONE
11	4117.190	BURNER PLATE
12	4117.191	BURNER FIBER PLATE
13	4033.253	POWER CORD SCHUKO
14	4100.656	NUT
15	4100.157	WASHER
16	4150.528	STRAIN RELIEF
17	4117.365	POWER CORD BRACKET
18	4111.480	WHEEL CAP
19	4111.072	WHEEL WASHER
20	4110.978	WHEEL
21	4117.006	FUEL GAUGE
22	4117.053	TANK CAP
23	4201.178	TANK FUEL FILTER
24	4117.048	STRAIGHT CONNECTION
25	4117.051	OIL PIPE
26	4031.070	FUEL FILTER
27	4117.050	SUCTION PIPE
28	4117.049	DISCHARGE NIPPLE
29	4117.047	PLASTIC TANK
30	4117.038	WHEELS AXLE
31	4117.015	FRONT TANK CHASSIS
32	4117.377	CHASSIS ROD
33	4117.013	REAR CHASSIS
34	4117.019	FOOT
35	4117.351	LEFT SIDE REINFORCEMENT
36	4117.378	LEFT SIDE SUPPORT
37	4117.353	RIGHT SIDE REINFORCEMENT
38	4117.379	RIGHT SIDE SUPPORT
39	4117.346	FILTER BRACKET
40	4117.036	REINFORCEMENT TUBE
41	4117.348	UPPER BRACKET
42	4117.246	LEFT HALF PLASTIC HANDLE
43	4117.247	RIGHT HALF PLASTIC HANDLE
44	4117.152	HANDLE PIN LOCK
45	4117.039	METAL TUBE
46	4117.011	HANDLES STRUCTURE
47	4032.813	DRAIN CAP

# **MODEL XL9 ER-SR**

UNIT 2

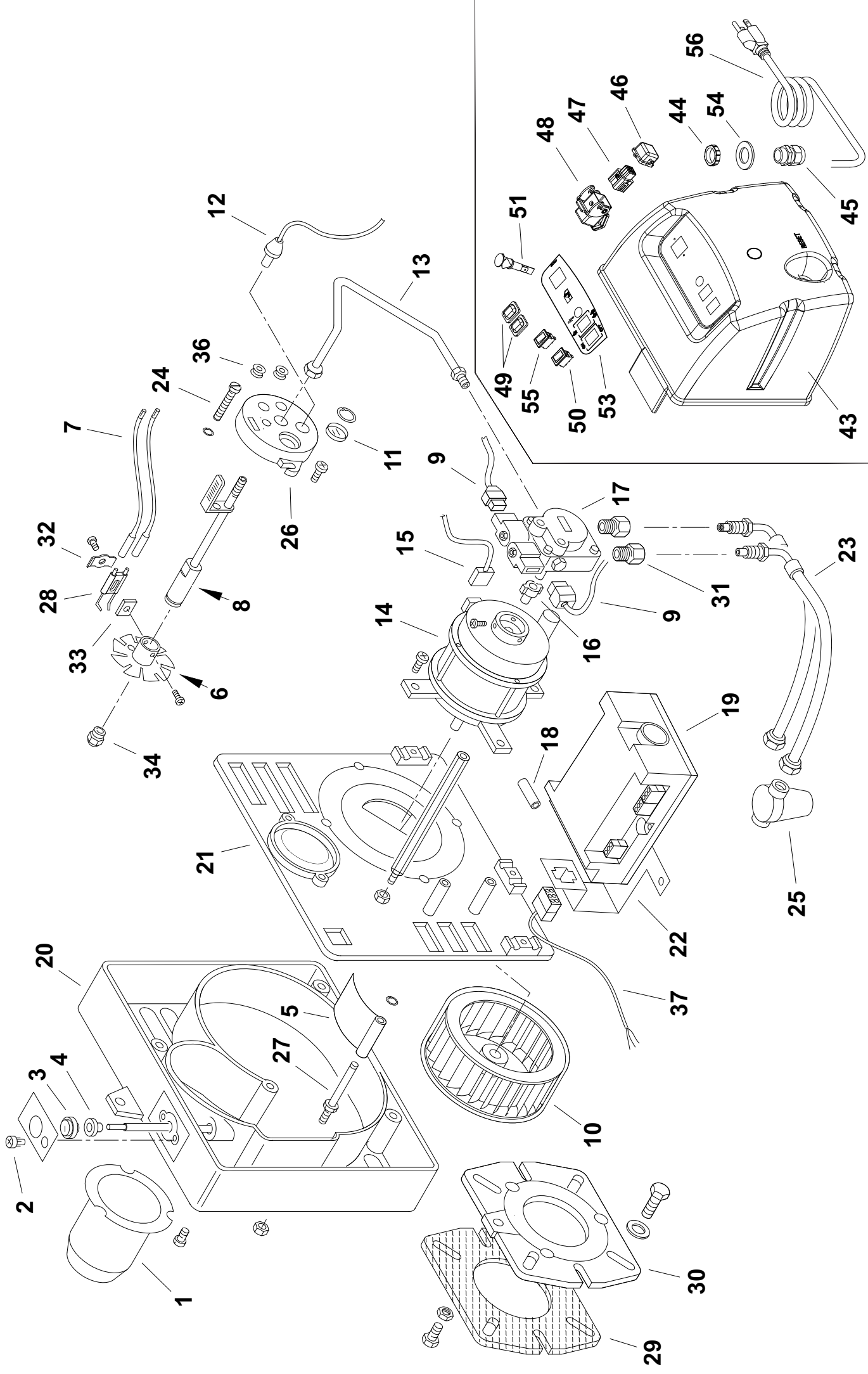
*RECOMMENDED SPARE PARTS*

---

<b>N°</b>	<b>CODE</b>	<b>DESCRIPTION</b>
4	4117.481	INSULATION FIBER CHAMBER
5	4117.043	RADIATION PLATE
12	4117.191	BURNER FIBER PLATE
20	4110.978	WHEEL
23	4201.178	TANK FUEL FILTER
26	4031.070	FUEL FILTER

---

**BURNER BXL 2 (2 STEP - XL9 S) 120V - 60Hz - Cod. 4117.403**



# MODEL XL 9SR - BURNER BXL2 - 110-120V/50-60Hz

UNIT 9

PARTS LIST

POS.	Code NR	Description
1	4117.128	BURNER CONE
2	N/A	SCREW
3	N/A	ROUND INDICATOR
4	N/A	SLEEVE
5	4117.129	BURNER FASTENER
6	4117.130	BURNER DISC
7	1*	ELECTRODE LINE
8	4117.136	NOZZLE SUPPORT
9	1*	ELECTROVALVE LINE
10	4117.134	FAN
11	N/A	FLAME CHECK
12	4117.413	PHOTOCELL
13	4117.135	COPPER TUBE
14	4117.414	MOTOR
14-1	4117.415	MOTOR CAPACITOR
15	1*	MOTOR LINE
16	4117.416	PUMP COUPLING
17	4117.465	OIL PUMP 2step
	4117.482	SPOOL 110-120 V
	4117.483	VALVE NO
	4117.497	VALVE NC
18	N/A	CAP
19	4117.420	PC-BOARD
20	4117.166	BURNER HOUSING
21	4117.421	BURNER HOUSING PLATE
22	4117.422	SUPPORT PC-BOARD
23	4117.142	OIL HOSES
24	N/A	SCREW
25	4031.070	FUEL FILTER
25-1	4031.015	FILTER ELEMENT
26	N/A	BURNER FLANGE
27	4117.146	DAMPER AXLE
28	4117.195	ELECTRODE
29	4117.148	BURNER FLANGE SEAL
30	4117.194	BURNER FLANGE CONNECTION
31	4117.455	CONNECTOR
32	N/A	ELECTRODE CLAMP
33	N/A	ELECTRODE SEAL
34	4117.157	NOZZLE
36	N/A	RUBBER RING
37	1*	6 PIN PLUG LINE

# MODEL XL 9SR - BURNER BXL2 - 110-120V/50-60Hz

UNIT 9

PARTS LIST

POS.	Code NR	Description
43	4117.499	BURNER COVER
44	4100.656	LOCKNUT
45	4150.528	STRAIN RELIEF
46	4162.467	THERMOSTAT CONNECTION PLUG
47	4161.400	CONNECTION SOCKET
48	4160.647	ANGULAR FIX CASE
49	4104.336	COVER SWITCH
50	4100.667	SWITCH
51	4117.467	PILOT LAMP
53	4117.123	BURNER LABEL
54	4100.157	WASHER
55	4117.111	POWER SWITCH
56	4117.192	POWER CORD

1*	KIT LINES	4117.427
2*	KIT LINES BURNER COVER	4117.423

N/A = Parts Not Available

## 4117.427 KIT LINES

4117.131	WIRE ELECTRODES XL9 ER-SR
4117.424	WIRE ELECTROVALVE XL 9ER-9SR UL
4117.425	WIRE BURNER MOTOR XL 9ER-9SR UL
4117.426	WIRE 6 PIN WITH FEMAL PLUG BXL 2 UL

## 4117.423 KIT LINES BURNER COVER

4117.406	WIRE CABLED 6 PIN 2-S VERSIONE UL - XL 9ER-SR
4117.409	WIRE THERMOSTAT BALCK UL - XL 9ER-SR

## RECOMMENDED SPARE PARTS

POS.	Code NR	Description
12	4117.413	PHOTOCELL
19	4117.420	FLAME CONTROL BASE
25-1	4031.015	FILTER ELEMENT
17	4117.465	OIL PUMP 2step
	4117.482	SPOOL 110-120 V
	4117.483	VALVE NO
	4117.497	VALVE NC
46	4162.467	THERMOSTAT CONNECTION PLUG
48	4160.647	ANGULAR FIX CASE



## Recycling



**ENVIRONMENTAL PROTECTION:** Please recycle any unwanted materials as opposed to disposing them as general waste. It is recommended the original is retained and used to store the product when not in use for prolonged periods of time. If this is not applicable ensure the materials are sorted and recycled in accordance with local regulations.



**SPECIFICATION CHANGE:** It is our policy to continually improve products to ensure these meet the rigours of the industry we serve. Therefore, as such we reserve the right to alter specifications, data, components & parts with-out prior notice.

**WARRANTY:** Please refer to the manufactures terms & conditions.

**IMPORTANT:** No liability will be accepted for the incorrect use of this product.

### **KEEP THIS BOOKLET FOR FUTURE REFERENCE**

📞 Nottingham: 0115 946 1988 • London: 0208 830 3333    ✉ Nottingham: [sales@hscgroupuk.co.uk](mailto:sales@hscgroupuk.co.uk) • London: [sean@hscgroupuk.co.uk](mailto:sean@hscgroupuk.co.uk)    🌐 [www.hscgroupuk.co.uk](http://www.hscgroupuk.co.uk)

The Hire Supply Company Terms & Conditions Apply At All Time E&OE