

CLARKE[®]

air



10 LITRE DEHUMIDIFIER (R290)

MODEL NO: DH10L

PART NO: 6470687

OPERATION & MAINTENANCE INSTRUCTIONS



DL0921 Iss 5

INTRODUCTION

Thank you for purchasing this CLARKE 10 Litre Dehumidifier.

Before attempting to use this product, please read this manual thoroughly and follow the instructions carefully. In doing so you will ensure the safety of yourself and that of others around you, and you can look forward to your purchase giving you long and satisfactory service.

GUARANTEE

This product is guaranteed against faulty manufacture for a period of 12 months from the date of purchase. Please keep your receipt which will be required as proof of purchase.

This guarantee is invalid if the product is found to have been abused or tampered with in any way, or not used for the purpose for which it was intended.

Faulty goods should be returned to their place of purchase, no product can be returned to us without prior permission.

This guarantee does not effect your statutory rights.

ENVIRONMENTAL PROTECTION



Recycle unwanted materials instead of disposing of them as waste. All unwanted accessories and packaging should be sorted and taken to a recycling centre for disposal in a manner which is compatible with the environment.



By purchasing this product, the customer is taking on the obligation to deal with its safe disposal in accordance with the Waste Electrical and Electronic Equipment regulations (WEEE).

In effect, this means that this product must not be disposed of with general household waste. It must be disposed of according to the laws governing Waste Electrical and Electronic Equipment (WEEE) at a recognised disposal facility.

R290 is a refrigerant that complies with EEC environmental standards; nonetheless, the refrigerant circuit on the machine should not be punctured. At the end of its working life, consign the dehumidifier unit to a special collection centre.

ELECTRICAL CONNECTIONS



WARNING! READ THESE ELECTRICAL SAFETY INSTRUCTIONS THOROUGHLY BEFORE CONNECTING THE PRODUCT TO THE MAINS SUPPLY.

Before switching the product on, make sure that the voltage of your electricity supply is the same as that indicated on the rating plate. This product is designed to operate on 230VAC 50Hz. Connecting it to any other power source may cause damage.

This product may be fitted with a non-rewireable plug. If it is necessary to change the fuse in the plug, the fuse cover must be refitted. If the fuse cover becomes lost or damaged, the plug must not be used until a suitable replacement is obtained.

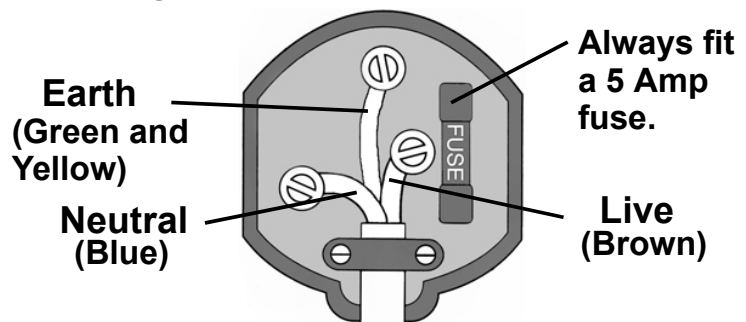
If the plug has to be changed because it is not suitable for your socket, or due to damage, it should be cut off and a replacement fitted, following the wiring instructions shown below. The old plug must be disposed of safely, as insertion we would emphasise the electrical hazard.



WARNING: WIRES IN THE MAINS LEAD ARE COLOURED IN ACCORDANCE WITH THE FOLLOWING CODE: GREEN/YELLOW = EARTH, BLUE = NEUTRAL, BROWN = LIVE.

- The **BLUE** wire must be connected to the terminal marked N or coloured black.
- The **BROWN** wire must be connected to the terminal marked L or coloured red.
- The **YELLOW AND GREEN** wire must be connected to the terminal marked E or \perp or coloured green.

Plug must be BS1363/A approved.

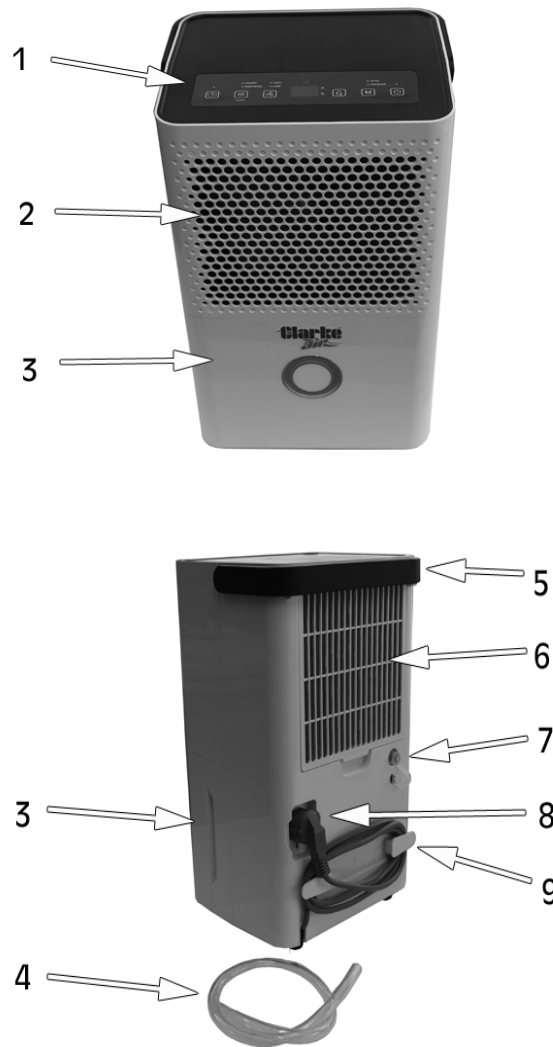


Ensure that the outer sheath of the cable is firmly held by the clamp

We strongly recommend that this machine is connected to the mains supply via a Residual Current Device (RCD).

If in any doubt, consult a qualified electrician. **DO NOT** attempt any repairs yourself.

OVERVIEW



No.	Description
1	Control Panel
2	Air Outlet
3	Water Tank
4	9mm Drainage Pipe
5	Fold Down Carrying Handle
6	Air Inlet and Filter
7	Water Drain Plug and Outlet
8	Power Cable & Plug Holder
9	Power Cable Storage Hooks

SAFETY WARNINGS



WARNING: IF THE SUPPLY CABLE IS DAMAGED, IT MUST BE REPLACED BY THE MANUFACTURER, ITS SERVICE AGENT OR SIMILARLY QUALIFIED PERSONS IN ORDER TO AVOID A HAZARD.

1. Please read these instructions carefully and retain for future reference.
2. Position the mains cable so that it cannot be inadvertently pulled or pinched and where it does not cause a trip hazard.
3. This appliance is designed to dehumidify residential environments and **MUST NOT** be used for other purposes.
4. If the appliance requires repair, always contact your CLARKE dealer. **ALWAYS** insist on original spare parts. Repairs carried out by unauthorized persons may be dangerous and invalidate the guarantee.
5. Children **SHOULD NOT** play with the appliance. Cleaning and user maintenance **SHOULD NOT** be undertaken by children.
6. Before cleaning or maintenance operations, **ALWAYS** unplug the appliance from the power supply.
7. **DO NOT** move the appliance by pulling the power cable.
8. **DO NOT** install the appliance in rooms containing gas, oil or fuel. **DO NOT** install near sources of heat.
9. **DO NOT** use the appliance on inclined surfaces.
10. Keep the appliance at least 50 cm away from inflammable substances (alcohol etc) or pressurised containers (e.g. aerosol cans).
11. **DO NOT** rest heavy or hot objects on top of the appliance.
12. **ALWAYS** transport the appliance upright. Remember to drain the tank before moving the appliance. **Wait at least 1 hour after transporting the appliance before using it to allow the refrigerant gasses to settle.**
13. **DO NOT** use the appliance outdoors.
14. **DO NOT** obstruct the air inlet or outlet.

R290 REFRIGERANT GAS (HYDROCARBON PROPANE)



H220: Extremely Flammable Gas.



H280: Contains Gas Under Pressure, May Explode if Heated.

R290 refrigerant gas complies with European environmental directives.

R290 has a low GWP (Global Warming Potential) of 3.

The dehumidifier contains approximately 52g of R290 refrigerant gas. The refrigerant system **MUST NOT** be perforated or punctured.

- **DO NOT** use or store in an unventilated space with an area smaller than 4m² per unit. The room must be such as to prevent stagnation of possible leaks of refrigerant gas as there could be a danger of fire or explosion hazard should the refrigerant come into contact with electric heaters, stoves or other sources of ignition.
- Refrigerant gas may be odourless.
- **DO NOT** use the product and contact the retailer for advice if damage has occurred to the unit which may have compromised the refrigerant system.
- Any repairs or maintenance must only be carried out on the unit by a suitably qualified engineer. Before opening and servicing the unit, the authorized engineer must be in possession of a copy of the manufacturer's service manual and must follow the safety information contained within it to ensure all hazards are minimized.

SAFETY SYMBOLS

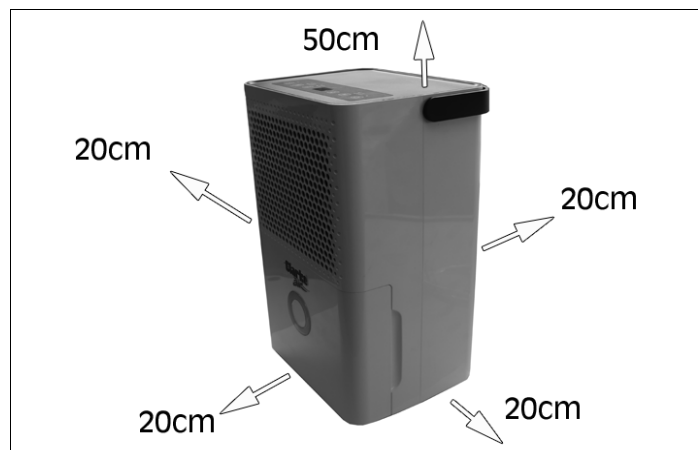
	<p>Read the manual and safety instructions before use</p>		<p>DO NOT COVER</p>	<p>Do not cover when in use</p>
	<p>Indoor use only</p>			

SETTING UP & POSITIONING THE DEHUMIDIFIER

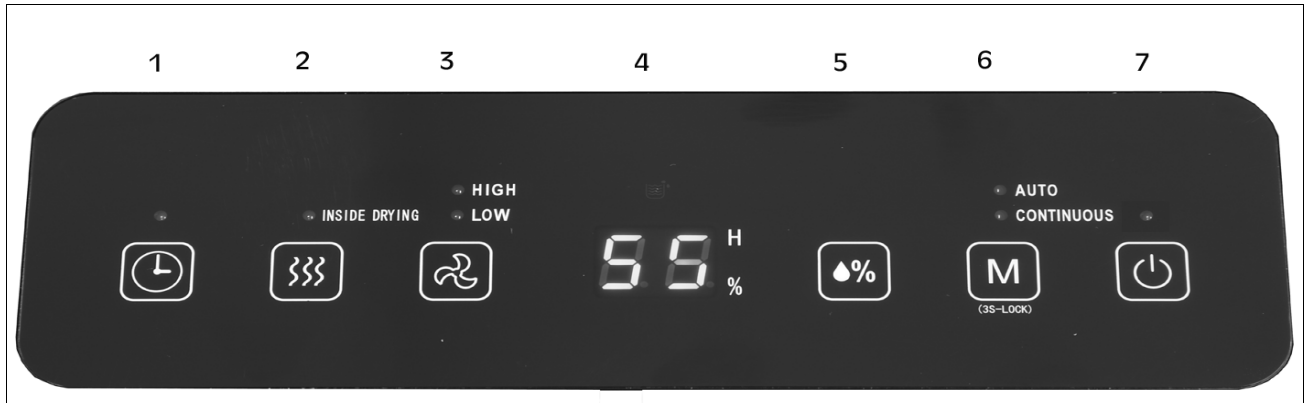


WARNING: DO NOT USE OR STORE THE DEHUMIDIFIER NEAR A HEAT SOURCE, AS THE UNIT CONTAINS PRESSURISED FLAMMABLE REFRIGERANT GAS (R290-HYDROCARBON PROPANE)

- Empty any water that is in the water tank before every use.
- During the running of the dehumidifier, refrain from opening doors or windows as much as possible.
- Position the dehumidifier close to a mains supply socket.
- The appliance should be installed, operated and stored in a room with a floor area larger than 4m²
- Free space as indicated must be left around the dehumidifier, so as not to block the air flow.
- Make sure that the power cable is not placed where it can be inadvertently pulled or pinched and where it does not cause a trip hazard.



OPERATION



CONTROL PANEL

1 = TIMER (24HR SETUP)

Press this button to set the length of time the dehumidifier runs for (1-24 Hours) via the LCD display. To cancel the timer, press the button twice once the timer is set.

2 = DRYING

Press this button to start the dehumidifier drying procedure. This will prevent mold inside the dehumidifier due to damp. The whole drying procedure takes approximately 1 hour. Press the button again to cancel the drying procedure.

3 = AIR SPEED

Use this button to adjust the fan speed (High or Low).

4 = LCD DISPLAY - DISPLAYS HUMIDITY, TIME & ERRORS

This displays the room humidity. When set in AUTO mode, this will display the set humidity in percentage of humidity.

5 = HUMIDITY SETTING

Press this button to display and change humidity range (30% - 80%). The humidity setting is only valid in AUTO mode.

6 = MODE

During start up or timer start up, press this button to select AUTO, CONTINUOUS or DRYING modes. The indicator light will correspond with the mode selected. Long press (3 seconds) the button to select child lock mode, repeat the procedure to cancel/turn off the child lock mode.

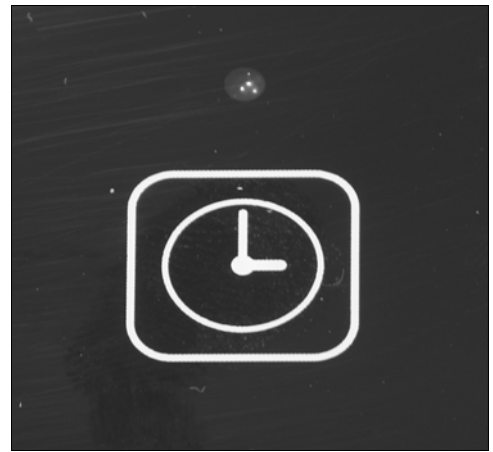
7 = ON/OFF

Press this button to turn the dehumidifier on or off.

SELECT MODE

SETTING OF TIMER - OFF

- When the dehumidifier is running, press the TIMER button to adjust the time from 1 hour to 24 hours, pressing once for each hour. If the time exceeds 24 hours, the count will reset to 1 hour and will start the cycle again.
- At the end of the set time, the dehumidifier will turn itself off automatically.



SETTING OF TIMER - ON

- When the dehumidifier is in standby mode, press the TIMER button to adjust the time from 1 hour to 24 hours, pressing once for each hour. If the time exceeds 24 hours, the count will reset to 1 hour and will start the cycle again.
- At the start of the set time, the dehumidifier will turn itself on automatically.

AUTO MODE

- Press the MODE button and select AUTO, if the room humidity is higher than the set humidity or is between +5% or -5% of the set humidity the compressor will start and the fan will run at the set speed. If the room humidity is lower than the set humidity by -5% then the compressor will stop but the fan will run at the set speed.



NOTE: The default set humidity value is 50%.

CONTINUOUS MODE

- Press the MODE button and select CONTINUOUS. No matter how high the relative humidity in the room is, the compressor will start, the fan will run at high speed and the air speed can be regulated via the AIR SPEED button.

DEHUMIDIFIER DRYING MODE

NOTE: The whole procedure takes approximately 1 hour.

HOW TO START

- Press the DRYING button to start drying within the dehumidifier.

- The dehumidifier will start at high air speed and release air continuously for 30 minutes.
- The dehumidifier will reduce to low air speed and run for 20 minutes.

HOW TO STOP

- Press the DRYING button again to cancel the drying procedure, which will return the dehumidifier to the running state before the start of the drying procedure.
- or Press the ON/OFF button to stop the drying procedure, which will return the dehumidifier to the standby state.



DRYING CLOTHES

Used to dry a carpet or small space or to dry wet clothes faster.

- Position the dehumidifier with the air inlet facing wet clothes/carpet.

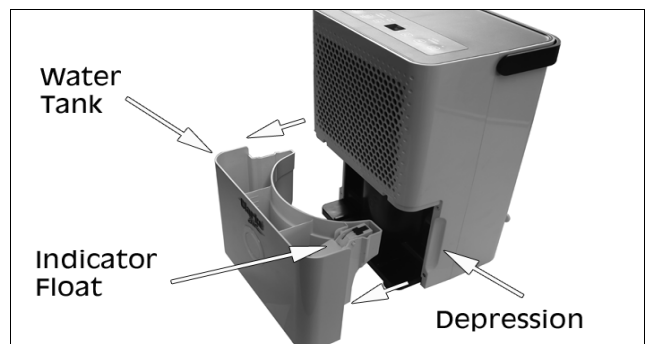
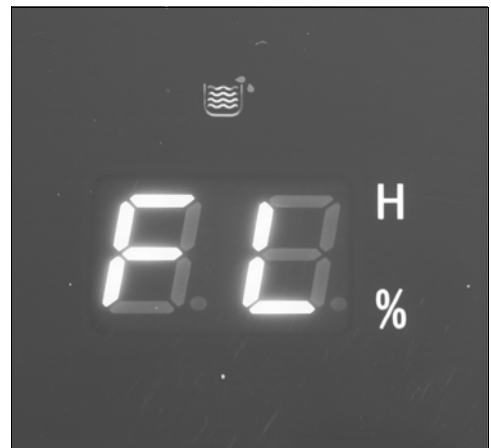
AIR CLEAN

Used to filter the air.

- The carbon filter must be fitted for the air cleaning function to work (see page 11).

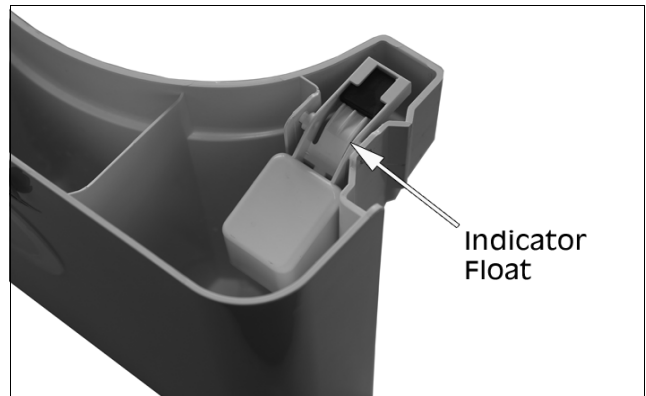
EMPTYING THE WATER TANK

1. When the full indicator on the control panel illuminates (FL) and the buzzer sounds 10 times, switch off and disconnect from the mains supply.
2. Carefully remove the water tank by placing your fingers in the depressions on either side of the tank and pulling forwards as shown.
3. Discard the water.



4. Before refitting the water tank, check to confirm the indicator float moves freely.
5. Refit the water tank.

NOTE: The unit will not operate unless the water tank is fitted correctly.

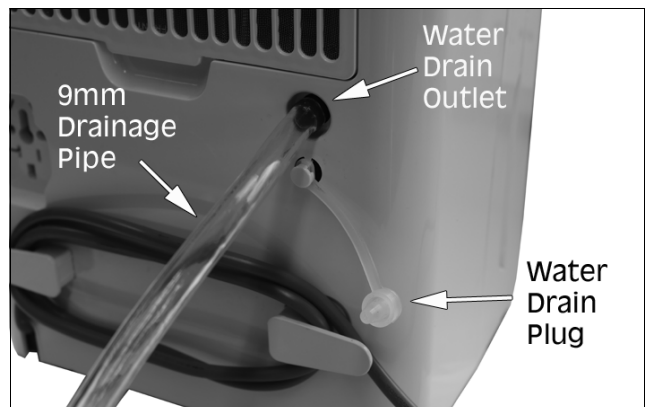


CONTINUOUS DRAINING

This function enables continuous dehumidifying without having to empty the water tank.

PREPARATION FOR CONTINUOUS DRAINING:

1. Locate the water drain plug on the rear of the machine and pull out.
2. Fit the drainage pipe supplied on to the water drain outlet.
3. Always replace the drain plug when not using the continuous draining procedure.



NOTE: The hose should have an internal diameter of 9mm and an outer diameter of 12mm.

NOTE: Make sure that the drain hose always runs downhill away from the dehumidifier and the end should be a minimum of 10cm below the water drain outlet.

DO NOT submerge the end of the pipe in water, as this may cause water to be drawn back up into the machine.

MAINTENANCE



WARNING: ALWAYS UNPLUG THE DEHUMIDIFIER BEFORE PERFORMING ANY CLEANING OR MAINTENANCE OPERATIONS.

CLEANING THE CABINET

- Use a soft damp cloth to clean the exterior.
- Never use harsh chemicals or abrasive cleaning agents as these may damage the casing finish.
- Clean the water tank and its cover regularly to prevent mould build up.

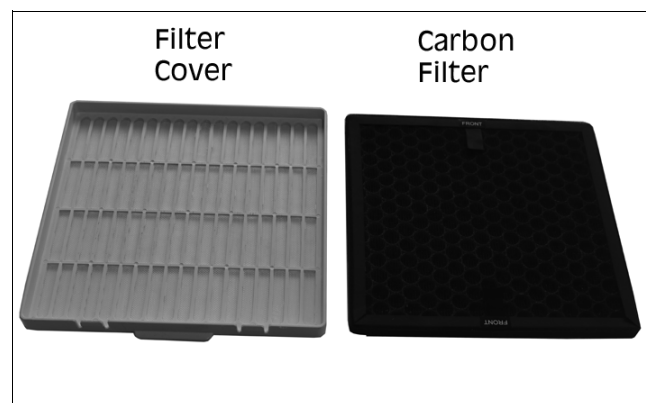
CLEANING THE AIR FILTER

1. Pull the filter cover forwards, from the bottom.



2. Remove the filter cover and lift the carbon filter from the cover.
3. Wash the filter under running water to remove any dust.
4. Allow the filter to dry naturally.
5. Refitting is the reverse process.

The frequency depends on the duration and the level of dust in the environment. If the machine is being used regularly, it is recommended that you clean the filter every 2 weeks.



STORAGE

- Unplug from the mains socket and empty the water tank.
- Clean and reinstall the filter.
- Cover the dehumidifier to prevent dust getting into the workings.

TROUBLESHOOTING

	Cause	Solution
No operation	Plug fuse failure.	Check fuse in plug and replace if necessary.
	Water tank is full or placed incorrectly.	Check water tank and empty if necessary and/or check water tank positioning.
	The ambient temperature is lower than 5°C or higher than 32°C.	This machine will not operate outside of these boundaries.
Dehumidifier function not effective	Room temperature too high, humidity too low.	In dry conditions the dehumidification ability will reduce.
	Air filter blocked.	Remove filter and clean, see page 12. Remove any dirt or obstruction from the air intake.
Noise is abnormal during operation	Dehumidifier is positioned improperly.	Check that dehumidifier is placed on a flat level surface.
	Air filter blocked.	Remove filter and clean, see page 12.
	There is a 'tittering' sound.	This is the flow of the refrigerant, which is a normal phenomenon.
Water Leak	Connection of drainage pipe become loose.	Check pipe connection.
	Drainage system is blocked.	Remove obstacle and straighten out drainage pipe.
Frosting Occurs	The ambient temperature is low and the machine is waiting for defrost.	This is a normal phenomenon and the dehumidifier has an automatic defrost function.

DISPLAY CODES

Display Code	Instruction	Action
FL	Water Tank is Full.	Empty Tank, See Page 9
E1	Coil Sensor Detects Anomaly.	Contact Your CLARKE Dealer for Assistance.
E2	Room Temperature Sensor Detects Anomaly.	Contact Your CLARKE Dealer for Assistance.
P1	Unit is in Defrosting State.	Normal, No Action Needed.
CL	Unit is in Internal Drying State.	Normal, No Action Needed.

TECHNICAL SPECIFICATION

Power Source	230 Volts AC 50Hz
Input Current @ Rated Load	1.3A
Dehumidifying Extraction Rate	10 litres/day
Water Tank Capacity	1.5 Litres
Air Flow Rate	80m ³ /h
Dimensions (LxWxH)	203 mm x 256 mm x 415 mm
Weight	9.88 kg
Operation Temperature	5°C - 32°C
Refrigerant	R290 (Hydrocarbon Propane)

DECLARATION OF CONFORMITY



DECLARATION OF CONFORMITY

This is an important document and should be retained.

We hereby declare that this product(s) complies with the following UK legislation:
Electromagnetic Compatibility Regulations 2016.
Electrical Equipment (Safety) Regulations 2016.
The Restriction of the Use of Certain Hazardous Substances in Electrical and Electronic Equipment Regulations 2012.

The following standards have been applied to the product(s):

EN 60335-1:2002+A11:2014+A13:2017, EN 60335-2-40:2003+A11:2004+A12:2005+A1:2006
+A2:2009+A13:2012, EN 55014-1:2017, EN 55014-2:2015, EN 61000-3-3:2013+A1:2019,
EN 62233:2008.

The technical documentation required to demonstrate that the product(s) meet(s) the requirement(s) of the aforementioned legislation has been compiled and is available for inspection by the relevant enforcement authorities.

This product was placed onto the market: 2020

Product Description: 10 Litre Dehumidifier
20 Litre Dehumidifier

Model number(s): DH10L
DH20L

Serial / batch Number: N/A
Date of issue: 10/05/2021

Signed:

J.A. Clarke
Director

DH20L DH10L Dehumidifier UKCA Clarke (v6)



Fitzwilliam Hall, Fitzwilliam Place, Dublin 2

DECLARATION OF CONFORMITY

This is an important document and should be retained.

We hereby declare that this product(s) complies with the following directive(s):
2014/30/EU Electromagnetic Compatibility Directive.
2014/35/EU Low Voltage Equipment Directive.
2011/65/EU Restriction of Hazardous Substances, (amended by 2015/863).

The following standards have been applied to the product(s):

EN 60335-1:2002+A11:2014+A13:2017, EN 60335-2-40:2003+A11:2004+A12:2005+A1:2006
+A2:2009+A13:2012, EN 55014-1:2017, EN 55014-2:2015, EN 61000-3-3:2013+A1:2019,
EN 62233:2008.

The technical documentation required to demonstrate that the product(s) meet(s) the requirement(s) of the aforementioned directive(s) has been compiled and is available for inspection by the relevant enforcement authorities.

The CE mark was first applied in: 2020

Product Description: 10 Litre Dehumidifier
20 Litre Dehumidifier

Model number(s): DH10L
DH20L

Serial / batch Number: N/A
Date of issue: 10/05/2021

Signed:

J.A. Clarke
Director

DH20L DH10L Dehumidifier CE Clarke DOC (v1)

Page 1 of 1

A SELECTION FROM THE VAST RANGE OF

Clarke®

QUALITY PRODUCTS



AIR COMPRESSORS
From DIY to industrial, Plus air tools, spray guns and accessories.

GENERATORS
Prime duty or emergency standby for business, home and leisure.

POWER WASHERS
Hot and cold, electric and engine driven - we have what you need

WELDERS
Mig, Arc, Tig and Spot. From DIY to auto/industrial.

METALWORKING
Drills, grinders and saws for DIY and professional use.

WOODWORKING
Saws, sanders, lathes, mortisers and dust extraction.

HYDRAULICS
Cranes, body repair kits, transmission jacks for all types of workshop use.

WATER PUMPS
Submersible, electric and engine driven for DIY, agriculture and industry.

POWERTOOLS
Angle grinders, cordless drill sets, saws and sanders.

STARTERS/CHARGERS
All sizes for car and commercial use.



PARTS & SERVICE: 0208 988 7400

Parts Enquiries
Parts@clarkeinternational.com

Servicing & Technical Enquiries
Service@clarkeinternational.com

SALES: UK 01992 565333 or Export 00 44 (0)1992 565335

Clarke INTERNATIONAL Hemnall Street, Epping, Essex CM16 4LG
www.clarkeinternational.com